

NEW
FEATURES
OF



TurningPoint[®]

COMING
SOON

ADVANTAGES OF



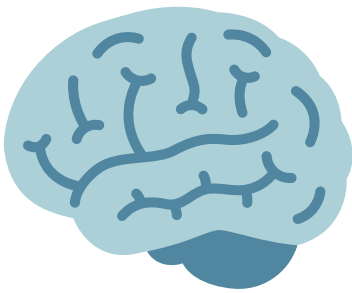
TurningPoint®

STUDENT ENGAGEMENT

TurningPoint users can easily create and ask interactive polling questions, as well as deliver assessments, evaluations and surveys to their students. With help from this learning tool, formative and summative assessments given during class are great ways to prompt conversation about relevant topics!



LEARNING RETENTION



TurningPoint tracks the effectiveness of both teaching and learning materials. In addition to assigning homework and surveys, professors may review participant development and evaluate the effectiveness of individual questions with generated reports through the software.

CONVENIENT DATA STORAGE

TurningPoint has the ability to run cataloged, detailed reports as well as track performance by demographics at any time. Professors may also upload previous questions and PowerPoints to be accessed, reviewed and saved by students on their personal study-schedules.



EASY USE & ACCESSIBILITY



Professors can poll on top of web pages, videos, documents or any application using the floating toolbar. On the receiving side, TurningPoint allows students to respond to the PowerPoint voting questions using their clickers, mobile phones, tablets and/or computers.

FEATURES OF LCD Clickers



POLLING RESPONSE



Clickers allow students to easily respond to real-time questions in various formats such as multiple-choice, matching, true/false and priority ranking.

HOTSPOTS



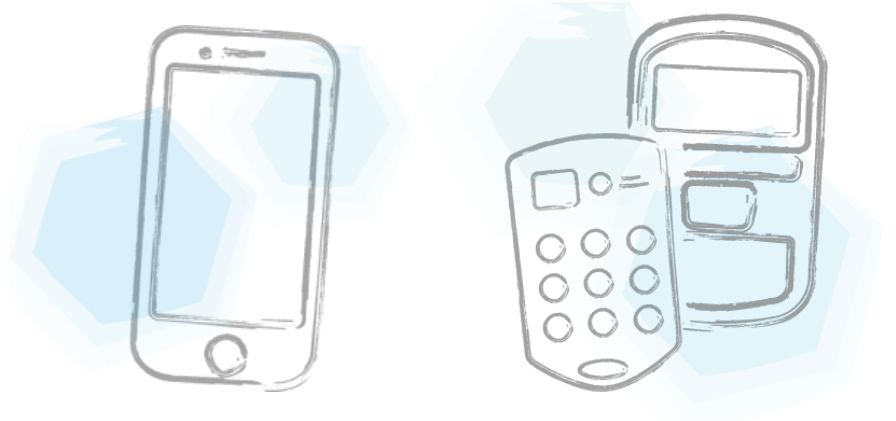
Clickers will now be involved in the new hotspot, image-based question type. This enables instructors to upload a picture into TurningPoint and designate the areas which encompass the correct response.

ATTENDANCE/GEOFENCING



Through the polling software, attendance can be tracked through answer participation. Clickers can also motivate student attendance by having professors select the "response-buttons-only" setting during certain classes.

COMPARISON OF LCD Clickers & Mobile Devices



FEATURES

MOBILE DEVICES

CLICKERS

Fosters student engagement



Handheld convenience



Integration with
TurningPoint software and
other polling options



Potential distraction
avoidance



Often kept on-hand in most
settings



Not reliant on software
installation



Greater level of feature
usage and interactivity



CONTACT
INFORMATION
SERVICES
FOR MORE DETAILS



(310) 506-7425

SUPPORT@LAW.PEPPERDINE.EDU